



Lospa

Modular Knee System

Lospa

Modular Knee System

Maintains Lospa Primary Knee System's Anatomical Features

Stability

Constrained motion
Increased AP stability

Modularity

Stem extension available
Augmentation

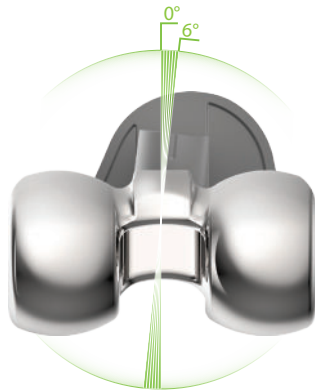
Longevity

Stabilized concave tibial post
Secured insert locking rod

Compatibility

Modular Femoral Component - Primary Tibial PS Insert
Primary Tibial PS/CR Insert - Modular Tibial Baseplate





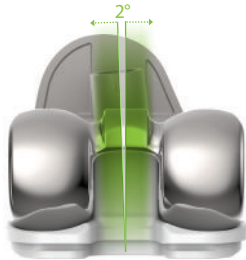
Stem housing angle: 6°

: The modular femoral component has a stem housing that is tilted 6° laterally.

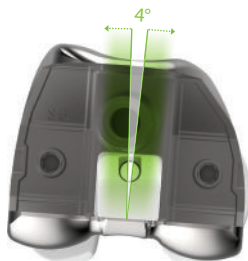


Stem housing position : 35% from anterior

Constrained Motion



at knee extension



at 75° flexion

	Varus - Valgus	I-E Rotation
Lospa Modular Knee System	±2°	±4°
Competitor 'S'	±2°	±10°
Competitor 'T'	±2°	±7°
Competitor 'N'	±1.25°	±2°
Competitor 'V'	±1°	±0.5°



Concaved shape

Concaved post design

:The posterior part of the post is concavely curved. After cam-post engagement at 75 degrees of flexion, the cam travels down the post. This reduces the risk of the dislocation and allows for deep flexion with joint stability.

Heightened post

: For better stability during the entire knee motion, the post height is designed higher than the Lospa Primary Knee System.

Femoral Component

Tibial Insert	Size	3	4	5	6	7	8	9	11	12	14	16
	Height (mm)	26	28	28	28	28	28	28	30	30	30	30
3	23	■	■									
4	23	■	■	■								
5	25		■	■	■	■						
6	25			■	■	■	■	■				
7	25			■	■	■	■	■				
8	25				■	■	■	■	■	■		
9	25				■	■	■	■	■	■		
11	27						■	■	■	■		
12	27								■	■	■	
14*	27										■	■
16*	27										■	■

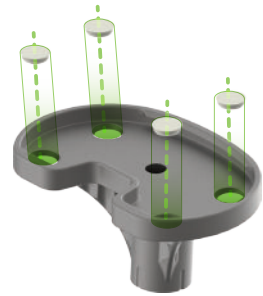


AP stability with more conforming articular surface



Baseplate – Insert locking

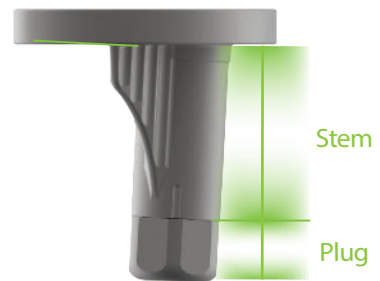
- : Full peripheral capture
- reduces micro motion
- : Locking rod
- reinforces fixation



Hole & Cap

Stem Length

Baseplate	Stem/Plug Length
# 3 ~ # 9	30mm
#11 ~ #16	35mm
Plug	10mm



Stem housing position : 35% from anterior

Reference	Position from anterior (%)
Lospa Modular Knee System	35%
Competitor 'S'	40%
Competitor 'T'	34%
Competitor 'N'	30%
Competitor 'V'	37%
Competitor 'P'	43%





Augment

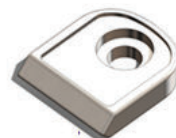
: Lospa Modular Knee System has two types of the Augment :
Block and Choren Pad.

Block

: complementing bone deficits
- Thickness: 5, 10, 15mm - Bolt/Cement fixation



Femoral Distal Block



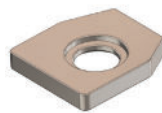
Femoral Posterior Block



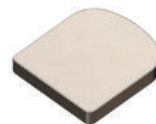
Tibial Half Block

Choren Pad (Correct Height Orientation Renovation)

: correcting unbalanced knee joint
- Thickness: 2, 3mm - Cement fixation



Femoral Distal Pad



Femoral Posterior Pad



Tibial Half Pad

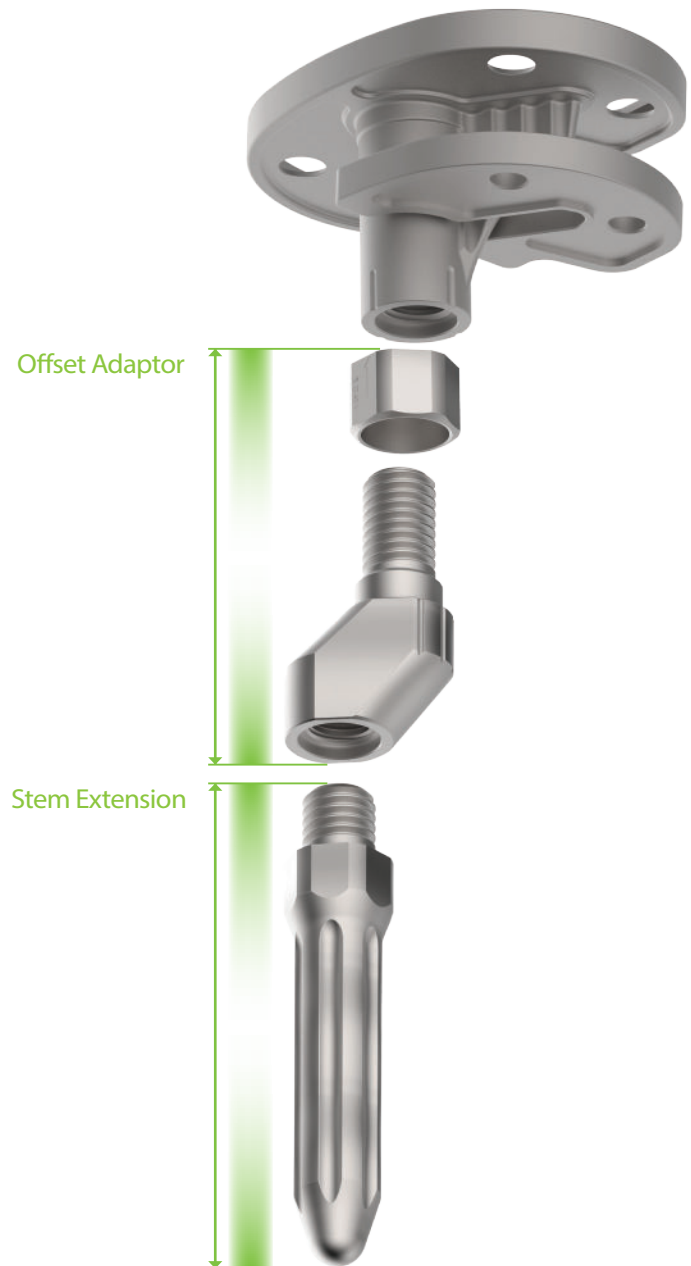
Stem Extension

Stem Extension

- : The fluted design can enhance the resistance to rotation.
- : Cemented type
- : Diameter
 - Ø9, 10, 11, 12, 13, 14, 15, 16, 18mm
- : Length
 - 30, 60, 90, 120, 150mm

Offset Adaptor

- : Offset - 2, 4, 6mm
- : Screw nut locking
- : 360° positioning
- : Length- 30mm



Size Combination

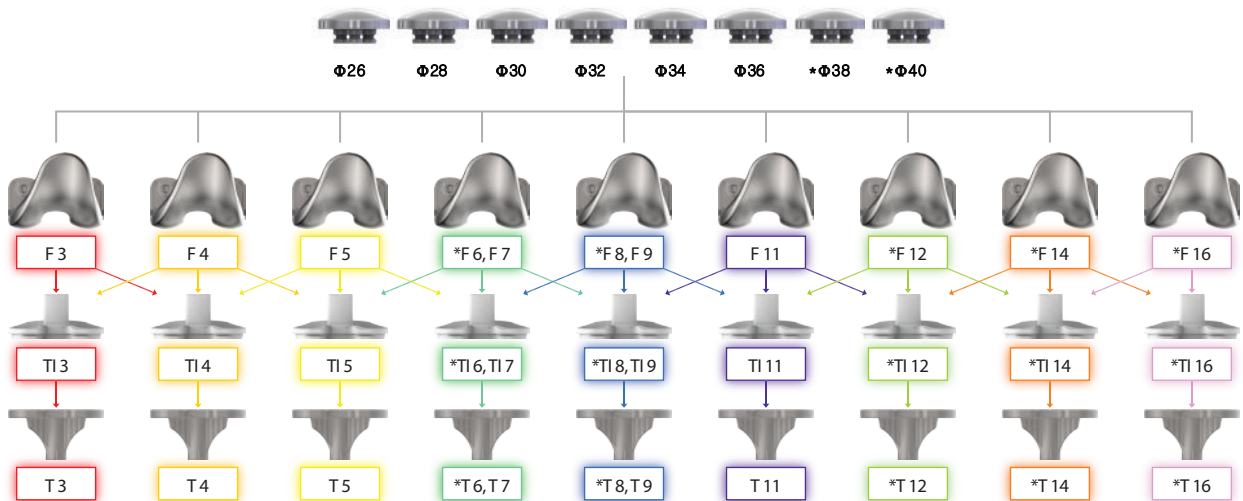
Bearing Couple

* : Special order

Tibial inserts	Femoral components										
	F3 51AP/59ML	F4 54AP/62ML	F5 57AP/65ML	*F6 60AP/65ML	F7 60AP/68ML	*F8 63AP/68ML	F9 63AP/71ML	F11 66AP/74ML	*F12 69AP/74ML	*F14 72AP/77ML	*F16 75AP/80ML
TI3 40AP/61ML	●										
TI4 42AP/64ML		●									
TI5 44AP/67ML			●								
*T6 45AP/70ML				●	●						
TI7 46AP/72ML				●	●						
*TI8 48AP/72ML						●	●				
TI9 48AP/74ML						●	●				
TI11 50AP/76ML								●			
*TI12 52AP/81ML									●		
*TI14 56AP/84ML										●	
*TI16 58AP/86ML											●

Size Combination Chart

* : Special order



Femoral Component

Part No.		Size	AP/ML (mm)
Left	Right		
K2.FBL.5159	K2.FBR.5159	3	51/59
K2.FBL.5462	K2.FBR.5462	4	54/62
K2.FBL.5765	K2.FBR.5765	5	57/65
K2.FBL.6065	K2.FBR.6065	6	60/65
K2.FBL.6068	K2.FBR.6068	7	60/68
K2.FBL.6368	K2.FBR.6368	8	63/68
K2.FBL.6371	K2.FBR.6371	9	63/71
K2.FBL.6674	K2.FBR.6674	11	66/74
K2.FBL.6974	K2.FBR.6974	12	69/74
K2.FBL.7277	K2.FBR.7277	14	72/77
K2.FBL.7580	K2.FBR.7580	16	75/80

Tibial Baseplate

With hole Cap

Part No.	Size	L (mm)	AP/ML (mm)
K2.BFN.4061-ASM	3	30	40/61
K2.BFN.4264-ASM	4	30	42/64
K2.BFN.4467-ASM	5	30	44/67
K2.BFN.4570-ASM	6	30	45/70
K2.BFN.4672-ASM	7	30	46/72
K2.BFN.4872-ASM	8	30	48/72
K2.BFN.4874-ASM	9	30	48/74
K2.BFN.5076-ASM	11	35	50/76
K2.BFN.5281-ASM	12	35	52/81
K2.BFN.5684-ASM	14	35	56/84
K2.BFN.5886-ASM	16	35	58/86

Stem Extension

Part No.	D x L (mm)
K2.C09.0030	9 x 30
K2.C09.0060	9 x 60
K2.C09.0090	9 x 90
K2.C09.0120	9 x 120
K2.C09.0150	9 x 150
K2.C09.0180	9 x 180
K2.C10.0030	10 x 30
K2.C10.0060	10 x 60
K2.C10.0090	10 x 90
K2.C10.0120	10 x 120
K2.C10.0150	10 x 150
K2.C10.0180	10 x 180
K2.C11.0030	11 x 30
K2.C11.0060	11 x 60
K2.C11.0090	11 x 90
K2.C11.0120	11 x 120
K2.C11.0150	11 x 150
K2.C11.0180	11 x 180

Part No.	D x L (mm)
K2.C12.0030	12 x 30
K2.C12.0060	12 x 60
K2.C12.0090	12 x 90
K2.C12.0120	12 x 120
K2.C12.0150	12 x 150
K2.C12.0180	12 x 180
K2.C13.0030	13 x 30
K2.C13.0060	13 x 60
K2.C13.0090	13 x 90
K2.C13.0120	13 x 120
K2.C13.0150	13 x 150
K2.C13.0180	13 x 180
K2.C14.0030	14 x 30
K2.C14.0060	14 x 60
K2.C14.0090	14 x 90
K2.C14.0120	14 x 120
K2.C14.0150	14 x 150
K2.C14.0180	14 x 180

Part No.	D x L (mm)
K2.C15.0010	15 x 10
K2.C15.0015	15 x 15
K2.C15.0020	15 x 20
K2.C15.0030	15 x 30
K2.C15.0060	15 x 60
K2.C15.0090	15 x 90
K2.C15.0120	15 x 120
K2.C15.0150	15 x 150
K2.C15.0180	15 x 180
K2.C16.0030	16 x 30
K2.C16.0060	16 x 60
K2.C16.0090	16 x 90
K2.C16.0120	16 x 120
K2.C16.0150	16 x 150
K2.C16.0180	16 x 180
K2.C18.0030	18 x 30
K2.C18.0060	18 x 60
K2.C18.0090	18 x 90

Part No.	D x L (mm)
K2.C18.0120	18 x 120
K2.C18.0150	18 x 150
K2.C18.0180	18 x 180
K2.C20.0030	20 x 30
K2.C20.0060	20 x 60
K2.C20.0090	20 x 90
K2.C20.0120	20 x 120
K2.C20.0150	20 x 150
K2.C20.0180	20 x 180

Tibial Insert

With locking rod

Part No.	Size	AP/ML (mm)	Locking Rod L(mm)	Part No.	Size	AP/ML (mm)	Locking Rod L(mm)	Part No.	Size	AP/ML (mm)	Locking Rod L(mm)
K2.IBN.4061-10A	3-10	40/61	31	K2.IBN.4570-10A	6-10	45/70	31	K2.IBN.5076-10A	11-10	50/76	31
K2.IBN.4061-12A	3-12		33	K2.IBN.4570-12A	6-12		33	K2.IBN.5076-12A	11-12		33
K2.IBN.4061-14A	3-14		35	K2.IBN.4570-14A	6-14		35	K2.IBN.5076-14A	11-14		35
K2.IBN.4061-16A	3-16		37	K2.IBN.4570-16A	6-16		37	K2.IBN.5076-16A	11-16		37
K2.IBN.4061-18A	3-18		39	K2.IBN.4570-18A	6-18		39	K2.IBN.5076-18A	11-18		39
K2.IBN.4061-20A	3-20		41	K2.IBN.4570-20A	6-20		41	K2.IBN.5076-20A	11-20		41
K2.IBN.4061-22A	3-22		43	K2.IBN.4570-22A	6-22		43	K2.IBN.5076-22A	11-22		43
K2.IBN.4061-24A	3-24		45	K2.IBN.4570-24A	6-24		45	K2.IBN.5076-24A	11-24		45
K2.IBN.4061-26A	3-26		47	K2.IBN.4570-26A	6-26		47	K2.IBN.5076-26A	11-26		47
K2.IBN.4264-10A	4-10	42/64	31	K2.IBN.4672-10A	7-10	46/72	31	K2.IBN.5281-10A	12-10	52/81	31
K2.IBN.4264-12A	4-12		33	K2.IBN.4672-12A	7-12		33	K2.IBN.5281-12A	12-12		33
K2.IBN.4264-14A	4-14		35	K2.IBN.4672-14A	7-14		35	K2.IBN.5281-14A	12-14		35
K2.IBN.4264-16A	4-16		37	K2.IBN.4672-16A	7-16		37	K2.IBN.5281-16A	12-16		37
K2.IBN.4264-18A	4-18		39	K2.IBN.4672-18A	7-18		39	K2.IBN.5281-18A	12-18		39
K2.IBN.4264-20A	4-20		41	K2.IBN.4672-20A	7-20		41	K2.IBN.5281-20A	12-20		41
K2.IBN.4264-22A	4-22		43	K2.IBN.4672-22A	7-22		43	K2.IBN.5281-22A	12-22		43
K2.IBN.4264-24A	4-24		45	K2.IBN.4672-24A	7-24		45	K2.IBN.5281-24A	12-24		45
K2.IBN.4264-26A	4-26		47	K2.IBN.4672-26A	7-26		47	K2.IBN.5281-26A	12-26		47
K2.IBN.4467-10A	5-10	44/67	31	K2.IBN.4872-10A	8-10	48/72	31	K2.IBN.5684-10A	14-10	56/84	31
K2.IBN.4467-12A	5-12		33	K2.IBN.4872-12A	8-12		33	K2.IBN.5684-12A	14-12		33
K2.IBN.4467-14A	5-14		35	K2.IBN.4872-14A	8-14		35	K2.IBN.5684-14A	14-14		35
K2.IBN.4467-16A	5-16		37	K2.IBN.4872-16A	8-16		37	K2.IBN.5684-16A	14-16		37
K2.IBN.4467-18A	5-18		39	K2.IBN.4872-18A	8-18		39	K2.IBN.5684-18A	14-18		39
K2.IBN.4467-20A	5-20		41	K2.IBN.4872-20A	8-20		41	K2.IBN.5684-20A	14-20		41
K2.IBN.4467-22A	5-22		43	K2.IBN.4872-22A	8-22		43	K2.IBN.5684-22A	14-22		43
K2.IBN.4467-24A	5-24		45	K2.IBN.4872-24A	8-24		45	K2.IBN.5684-24A	14-24		45
K2.IBN.4467-26A	5-26		47	K2.IBN.4872-26A	8-26		47	K2.IBN.5684-26A	14-26		47
				K2.IBN.4874-10A	9-10	48/74	31	K2.IBN.5886-10A	16-10	58/86	31
				K2.IBN.4874-12A	9-12		33	K2.IBN.5886-12A	16-12		33
				K2.IBN.4874-14A	9-14		35	K2.IBN.5886-14A	16-14		35
				K2.IBN.4874-16A	9-16		37	K2.IBN.5886-16A	16-16		37
				K2.IBN.4874-18A	9-18		39	K2.IBN.5886-18A	16-18		39
				K2.IBN.4874-20A	9-20		41	K2.IBN.5886-20A	16-20		41
				K2.IBN.4874-22A	9-22		43	K2.IBN.5886-22A	16-22		43
				K2.IBN.4874-24A	9-24		45	K2.IBN.5886-24A	16-24		45
				K2.IBN.4874-26A	9-26		47	K2.IBN.5886-26A	16-26		47

Part No.	Offset (mm)
K2.OFT.1502-ASY	2
K2.OFT.1504-ASY	4
K2.OFT.1506-ASY	6
K2.OFT.1508-ASY	8

Part No.	D(mm)
K2.BXP.1510	10

with nut

Augment - Block

Femoral Distal Block

With fixation bolt

Part No.	Femur Size	T(mm)
K4.FD2.0305-ASY	3	5
K4.FD2.0405-ASY	4	5
K4.FD2.0505-ASY	5	5
K4.FD2.0605-ASY	6	5
K4.FD2.0705-ASY	7	5
K4.FD2.0805-ASY	8	5
K4.FD2.0905-ASY	9	5
K4.FD2.1105-ASY	11	5
K4.FD2.1205-ASY	12	5
K4.FD2.1405-ASY	14	5
K4.FD2.1605-ASY	16	5
K4.FD2.0310-ASY	3	10
K4.FD2.0410-ASY	4	10
K4.FD2.0510-ASY	5	10
K4.FD2.0610-ASY	6	10
K4.FD2.0710-ASY	7	10
K4.FD2.0810-ASY	8	10
K4.FD2.0910-ASY	9	10
K4.FD2.1110-ASY	11	10
K4.FD2.1210-ASY	12	10
K4.FD2.1410-ASY	14	10
K4.FD2.1610-ASY	16	10
K4.FD2.0315-ASY	3	15
K4.FD2.0415-ASY	4	15
K4.FD2.0515-ASY	5	15
K4.FD2.0615-ASY	6	15
K4.FD2.0715-ASY	7	15
K4.FD2.0815-ASY	8	15
K4.FD2.0915-ASY	9	15
K4.FD2.1115-ASY	11	15
K4.FD2.1215-ASY	12	15
K4.FD2.1415-ASY	14	15
K4.FD2.1615-ASY	16	15

Femoral Posterior Block

With fixation bolt

Part No.	Femur Size	T(mm)
K4.FP2.0305-ASY	3	5
K4.FP2.0405-ASY	4	5
K4.FP2.0505-ASY	5	5
K4.FP2.0605-ASY	6	5
K4.FP2.0705-ASY	7	5
K4.FP2.0805-ASY	8	5
K4.FP2.0905-ASY	9	5
K4.FP2.1105-ASY	11	5
K4.FP2.1205-ASY	12	5
K4.FP2.1405-ASY	14	5
K4.FP2.1605-ASY	16	5
K4.FP2.0310-ASY	3	10
K4.FP2.0410-ASY	4	10
K4.FP2.0510-ASY	5	10
K4.FP2.0610-ASY	6	10
K4.FP2.0710-ASY	7	10
K4.FP2.0810-ASY	8	10
K4.FP2.0910-ASY	9	10
K4.FP2.1110-ASY	11	10
K4.FP2.1210-ASY	12	10
K4.FP2.1410-ASY	14	10
K4.FP2.1610-ASY	16	10
K4.FP2.0315-ASY	3	15
K4.FP2.0415-ASY	4	15
K4.FP2.0515-ASY	5	15
K4.FP2.0615-ASY	6	15
K4.FP2.0715-ASY	7	15
K4.FP2.0815-ASY	8	15
K4.FP2.0915-ASY	9	15
K4.FP2.1115-ASY	11	15
K4.FP2.1215-ASY	12	15
K4.FP2.1415-ASY	14	15
K4.FP2.1615-ASY	16	15

Tibial Half Block

With fixation bolt

Part No.	Tibia Size	T(mm)
K4.TH2.0305-ASY	3	5
K4.TH2.0405-ASY	4	5
K4.TH2.0505-ASY	5	5
K4.TH2.0605-ASY	6	5
K4.TH2.0705-ASY	7	5
K4.TH2.0805-ASY	8	5
K4.TH2.0905-ASY	9	5
K4.TH2.1105-ASY	11	5
K4.TH2.1205-ASY	12	5
K4.TH2.1405-ASY	14	5
K4.TH2.1605-ASY	16	5
K4.TH2.0310-ASY	3	10
K4.TH2.0410-ASY	4	10
K4.TH2.0510-ASY	5	10
K4.TH2.0610-ASY	6	10
K4.TH2.0710-ASY	7	10
K4.TH2.0810-ASY	8	10
K4.TH2.0910-ASY	9	10
K4.TH2.1110-ASY	11	10
K4.TH2.1210-ASY	12	10
K4.TH2.1410-ASY	14	10
K4.TH2.1610-ASY	16	10
K4.TH2.0315-ASY	3	15
K4.TH2.0415-ASY	4	15
K4.TH2.0515-ASY	5	15
K4.TH2.0615-ASY	6	15
K4.TH2.0715-ASY	7	15
K4.TH2.0815-ASY	8	15
K4.TH2.0915-ASY	9	15
K4.TH2.1115-ASY	11	15
K4.TH2.1215-ASY	12	15
K4.TH2.1415-ASY	14	15
K4.TH2.1615-ASY	16	15

Augment - Choren Pad

Femoral Distal Choren Pad

Part No.	Femur Size	T(mm)
K4.FDA.0302	3	2
K4.FDA.0402	4	2
K4.FDA.0502	5	2
K4.FDA.0602	6	2
K4.FDA.0702	7	2
K4.FDA.0802	8	2
K4.FDA.0902	9	2
K4.FDA.1102	11	2
K4.FDA.1202	12	2
K4.FDA.0303	3	3
K4.FDA.0403	4	3
K4.FDA.0503	5	3
K4.FDA.0603	6	3
K4.FDA.0703	7	3
K4.FDA.0803	8	3
K4.FDA.0903	9	3
K4.FDA.1103	11	3
K4.FDA.1203	12	3

Femoral Posterior Choren Pad

Part No.	Femur Size	T(mm)
K4.FPA.0302	3	2
K4.FPA.0402	4	2
K4.FPA.0502	5	2
K4.FPA.0602	6	2
K4.FPA.0702	7	2
K4.FPA.0802	8	2
K4.FPA.0902	9	2
K4.FPA.1102	11	2
K4.FPA.1202	12	2
K4.FPA.0303	3	3
K4.FPA.0403	4	3
K4.FPA.0503	5	3
K4.FPA.0603	6	3
K4.FPA.0703	7	3
K4.FPA.0803	8	3
K4.FPA.0903	9	3
K4.FPA.1103	11	3
K4.FPA.1203	12	3

Tibial Half Choren Pad

Part No.	Tibia Size	T(mm)
K4.THA.0302	3	2
K4.THA.0402	4	2
K4.THA.0502	5	2
K4.THA.0602	6	2
K4.THA.0702	7	2
K4.THA.0802	8	2
K4.THA.0902	9	2
K4.THA.1102	11	2
K4.THA.1202	12	2
K4.THA.0303	3	3
K4.THA.0403	4	3
K4.THA.0503	5	3
K4.THA.0603	6	3
K4.THA.0703	7	3
K4.THA.0803	8	3
K4.THA.0903	9	3
K4.THA.1103	11	3
K4.THA.1203	12	3



Manufacturing Plant 12, Yeongsanhong 1-gil, Ipjang-myeon, Sebuk-gu, Cheonan-si, Chungcheongnam-d0, Korea 31056 TEL. 82-41-585-7114 FAX. 82-41-585-7113
Seoul Office 8F, 11F, Chunggho Tower, 483, Gangnam-daero, Seocho-gu, Seoul, Korea 06541 TEL. 82-2-3445-5492~5 FAX.82-2-3445-5467, 5497
Corentec America 60 Washington Street, Suite 202, Morristown, NJ 07960, USA TEL 1-862-777-8320 FAX 1-862-777-8319
Corentec China Room No.20, Knowledge & Innovation Business Center 3F, DongLan Road 238, Minhang District, Shanghai, China 201102 TEL. 86-18616375431
EC Representative : Emergo Europe Prinsessegracht 20, 2514 AP, The Hague, The Netherlands

www.corentec.com
CRSC-0110-M03(03)



Joint Stability with Modularity